



مدرسة الرشيد الأمريكية الخاصة  
Al Rushed American Private School

معلوم نافعة وأخلاق راقية

مدرسة الرشيد الأمريكية الخاصة

# School Uniform Policy and Uniform Guide

Al Rushed American Private School



All students are encouraged to take pride in being members of ARAS school community. Their uniform identifies them as such. Our uniform ensures that students are well dressed and follow the instructions. Appropriate dress is expected of all students and good grooming is equally important. All members of staff are expected to check students for general neatness. The wearing of a uniform removes opportunities for peer pressure and bullying. All students are dressed to the same professional standard. Although the initial expense of a school uniform may be costly over time it is more affordable, avoids conflict and it is more manageable both for the students and their parents.

The following are the guidelines for student dress, appearance, and grooming:

1. Students must wear school uniform during the whole school day.
2. Inappropriately dressed students will be sent home immediately to change into the school uniform and get back to school.
3. Parents will be contacted if the uniform worn by their child is incomplete or inappropriate.
4. Boys' hair should be cut clear off the collar. No long hair, no mushroom cut, no marine cut, and no partly shaved head are permitted. Dramatic hairstyles, hair colors, and highlights are not permitted. Body piercing and tattoos are not permitted.
5. Boy's shirts should always be tucked into pants.
6. Shoes should always be clean, tied, and polished. Only black shoes are permitted. Stud shoes are strictly prohibited.
7. Bracelets and necklaces are not permitted to be worn by boys, and jewelry is not to be worn by girls.



8. Ball caps and fashion hats of any description are not permitted to be worn on the school campus at any time.
9. Nail polish, gel nails, acrylic nails, and make-up are not permitted to be worn by girls.
10. Students must always be tidy and clean (with clean uniform, clean hair, and clean and short nails).
11. Students must wear the school winter jacket during cold weather. No other jackets are permitted.
12. Students are allowed to attend school dressed in the PE uniform **ONLY** if they have a PE class.
13. KG students are encouraged to wear velcro shoes.

### **Uniforms/ KG**

#### **For Boys:**

1. **Regular:** Pink striped shirt with school logo, navy blue pants, and jackets with school logo.
2. **PE:** White T-shirt, navy blue pants, and jackets with school logo.

#### **For Girls:**

1. **Regular:** Pink striped shirt with school logo, pink dress and navy blue jackets with school logo.
2. **PE:** White T-shirt, navy blue pants and jackets with school logo.

### **Uniforms/ Grades (1-12)**

#### **For Boys:**

1. **Regular:** Bleu shirt with school logo, navy blue pants and jackets with school logo.
2. **PE:** Grey T-shirt, grey pants and jackets with school logo.



**For Girls:**

1. **Regular:** Light bleu shirt and grey dress with school logo
2. **PE:** Grey T-shirt, grey pants and jackets with school logo.

**Policy Review**

- This policy is to be reviewed annually.
- Created: Dec. 2019
- Reviewed: Dec. 2022
- Reviewed: Aug. 2024





مدرسة الرشيد الأمريكية الخاصة

AL RUSHED AMERICAN PRIVATE SCHOOL

# UNIFORM GUIDE



مدرسة الرشيد الأمريكية الخاصة  
Al Rashed American Private School

**Introduction**

**PE Uniform for Boys (KG to Gr 12)**

**PE Uniform & Winter Jacket for Girls (KG to Gr 12)**

**School Uniform for Boys (KG to Gr 12)**

**Girls Uniform (Gr 1 to Gr 12)**

**Sizing Guides**

**Uniform Care Guide**



مدرسة الرشيد الأمريكية الخاصة  
Al Rashed American Private School

We have been an established and popular company with an excellent track record for the best customer satisfaction. we have never compromised on the quality and the services to the customers.

Providing unique benefits of PLOVER to clients has been the key to our success. Thus, we live to serve our promised quotation and deliver proposed clothing products on time that you will love wearing and demand time and again the same clothes in the future.

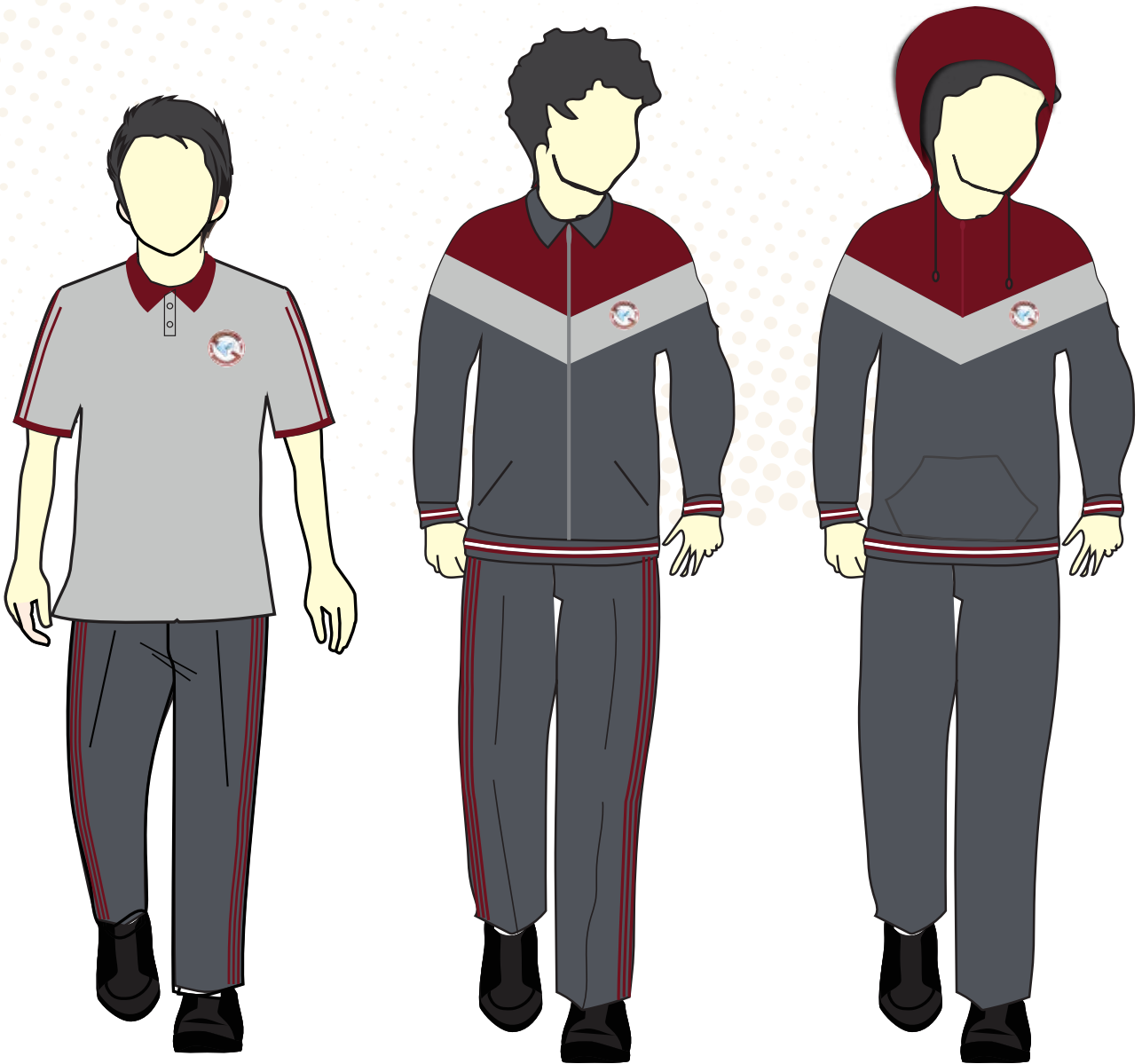
## **PLOVER TAILORING offers parents**

- Our excellence is our best advertisement. Supporting the needs of our customers
- The latest styles and fabrics from the selected quality.
- All sizes in stock year-round.our expert team works behind the measurement.
- Competitive and affordable prices. We want to make our customers feel like the money they spent was a worthy investment.
- Alteration services. We collaborate with them in order to ensure that the end product created can be qualified in regards to quality.
- On-site embroidery and screen printing.



مدرسة الرشيد الأمريكية الخاصة  
Al Rashed American Private School

## PE Uniform & WINTER JACKET Boys



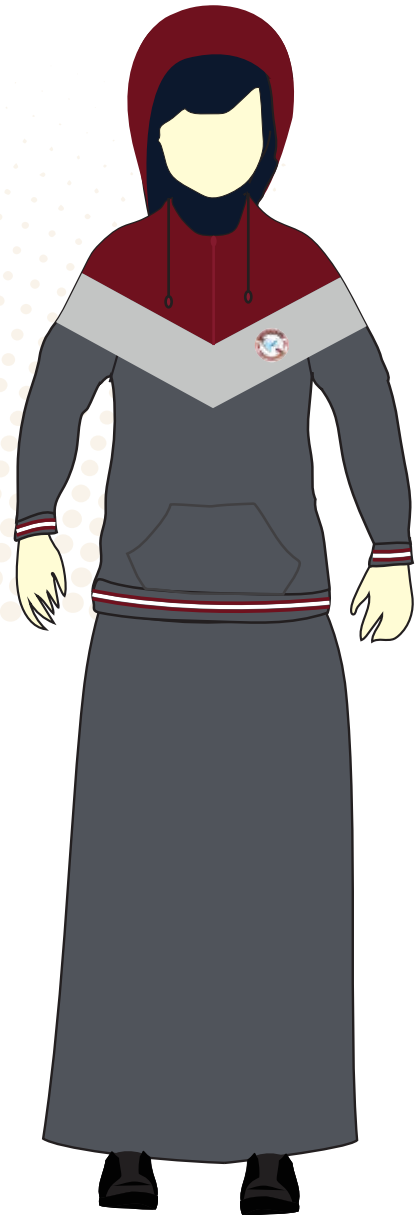
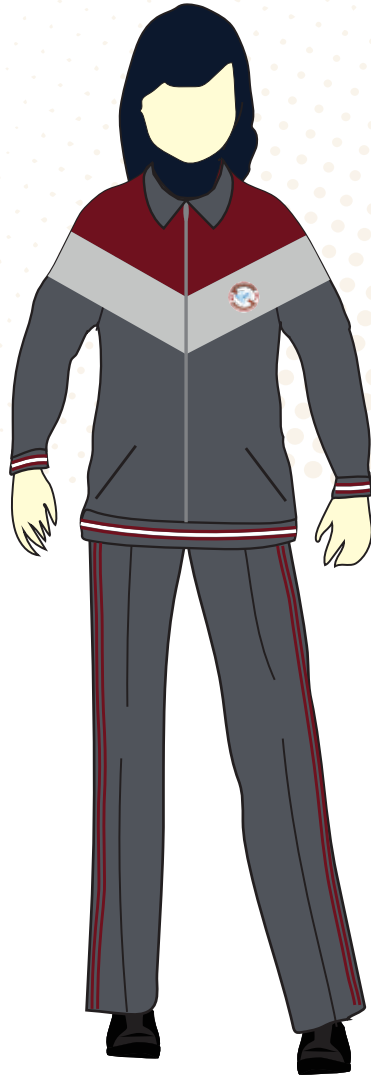
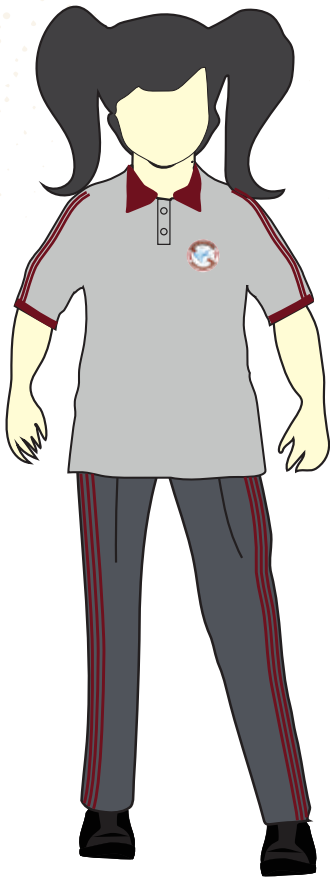
KG to Gr 12





مدرسة الرشيد الأمريكية الخاصة  
Al Rushed American Private School

## PE Uniform & WINTER JACKET Girls

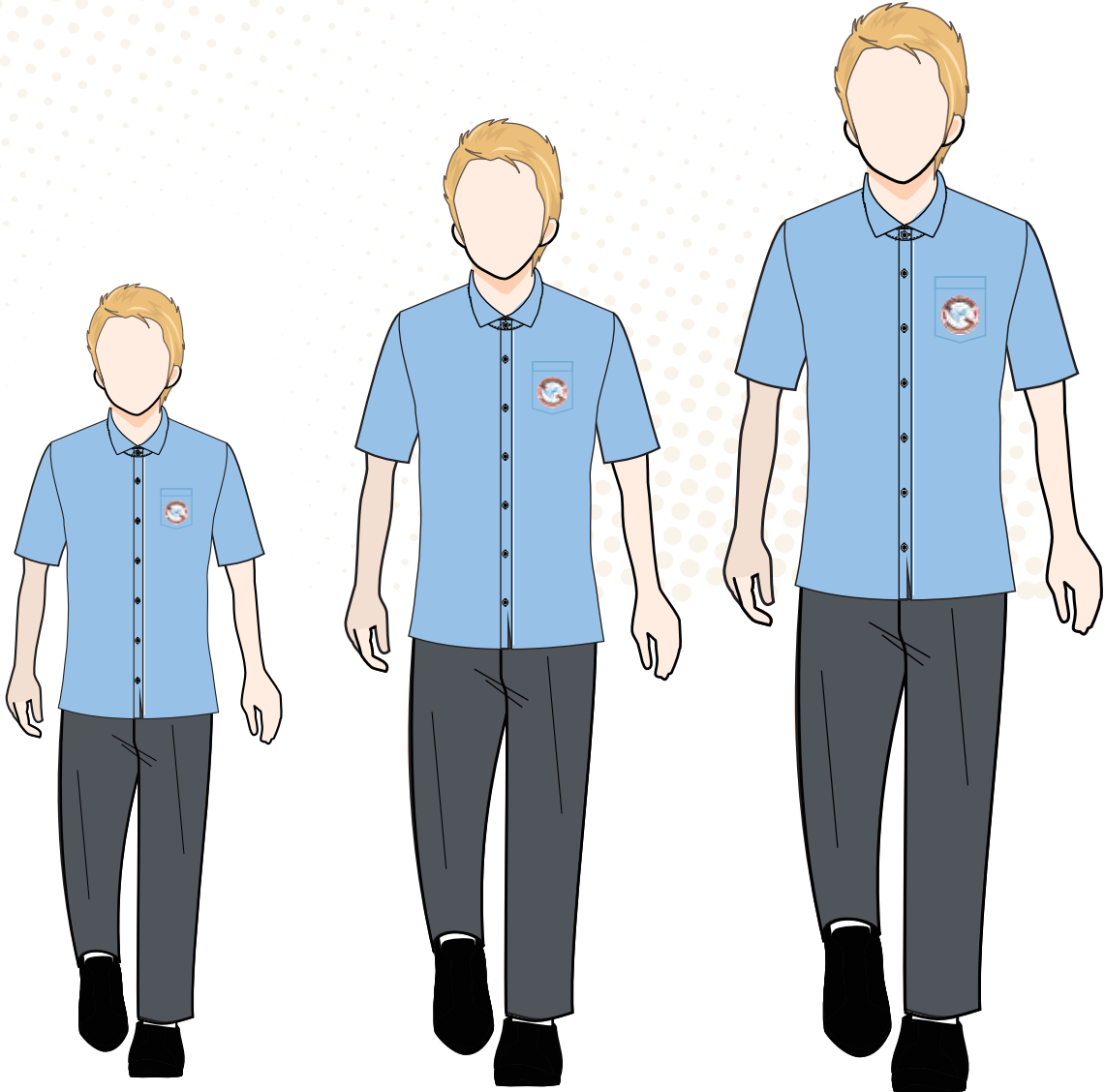


KG to Gr 12



مدرسة الرشيد الأمريكية الخاصة  
Al Rashed American Private School

## Boys Uniform

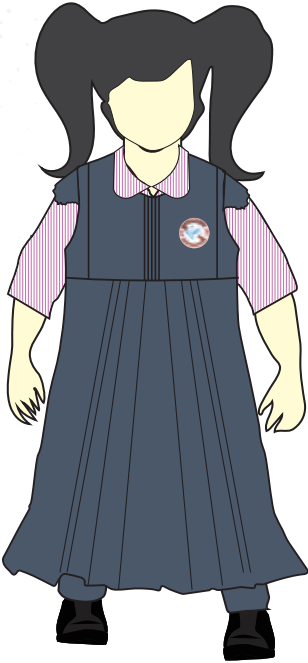


KG to Gr 12

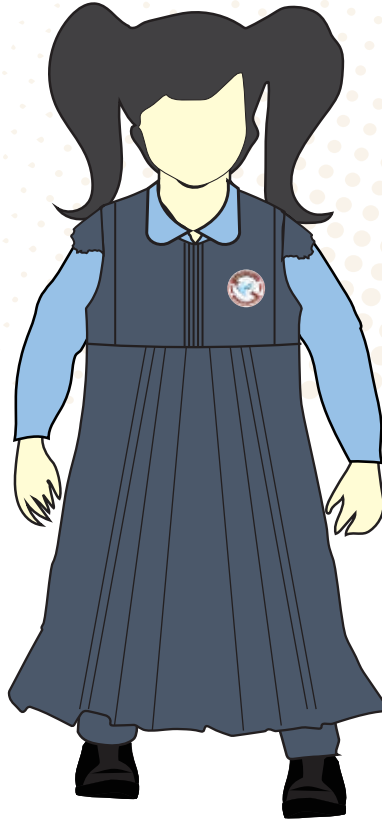


مدرسة الرشيد الأمريكية الخاصة  
Al Rashed American Private School

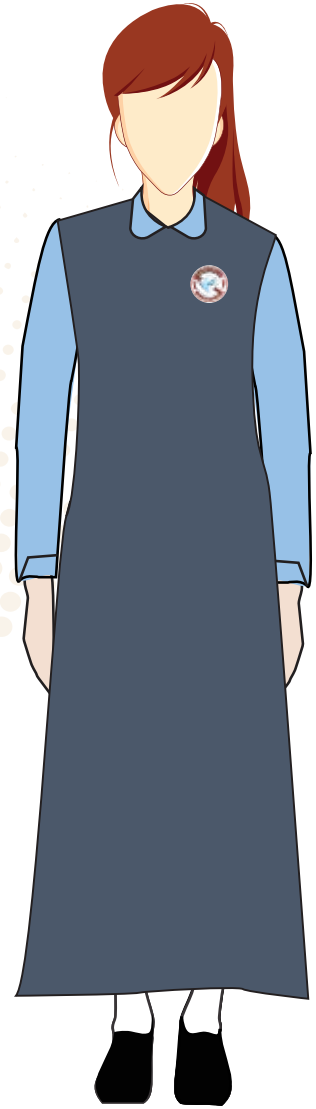
## Girls Uniform



KG



Grade 1 to 5

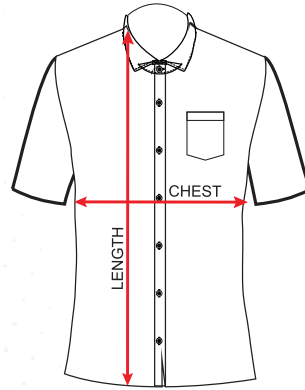


Gr 6 to Gr 12



مدرسة الرشيد الأمريكية الخاصة  
Al Rushed American Private School

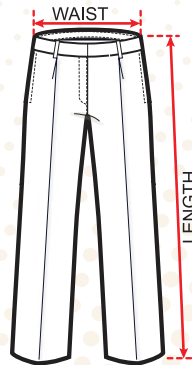
# Size Guide



## Boys Shirts

KG - GR 12

Size	2	3	4	5	6	7	8	9	10
Length	17	18	19	19.5	20.5	21.5	22	23	24
SHOULDER	11	11.5	12	12.5	13	13.5	14	14.5	15
CHEST	27	28	29	30	31	32	33	34	35
<b>KG-12 BOYS SHIRT</b>									
SIZE	11	12	13	14	15	16	17	18	20
Length	24.5	25.5	26.5	27.5	28	28.5	29	29.5	30.5
SHOULDER	15.5	16	16.5	17	17.5	18	18.5	19	19.5
CHEST	36	37	38	39	41	42	44	46	48



## Boys Trousers

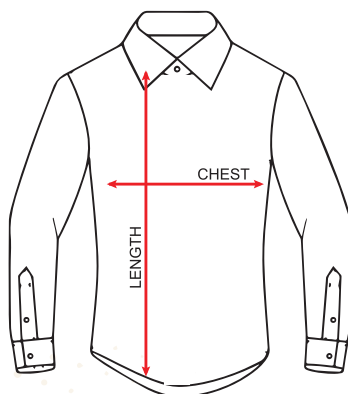
KG - GR 12

SIZE	2	3	4	5	6	7	8	9	10
LENGTH	22.75	24	25.5	27	28.5	29.5	30.75	33.25	35
WAIST RELAXED	17	18	19	20	21	22	23	24	25
WAIST EXTENDED	23.5	24.5	25.5	26.5	27.5	28.5	29.5	31	32
HIP	28	29	30	31	32	33	34	35	36
SIZE	11	12	13	14	15	16	17	18	20
LENGTH	36.5	37.5	38.5	39.5	40.5	41	42	43.5	44
WAIST RELAXED	26	27	28	29	30	31	32	33	36
WAIST EXTENDED	34	35	36	37	38	39.5	41	42.5	44.5
	37	38	39	40	41	42	44	46	48



مدرسة الرشيد الأمريكية الخاصة  
Al Rushed American Private School

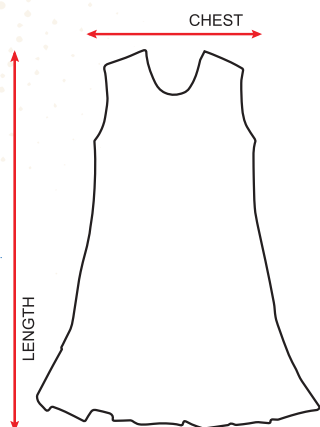
# Size Guide



## Girls Shirts

KG - GR 12

Size	2	3	4	5	6	7	8	9	10	
Length	17	18	19	19.5	20	21	21.5	22.5	23.5	
CHEST	27	28	29	30	31	32	33	34	35	
SIZE	11	12	13	14	15	16	17	18	19	20
Length	24	25	26	27	27.5	28.5	29	29.5	30	30.5
CHEST	36	37	38	39	40	42	43	45	46	48



## School Dress for Girls

KG - GR 5

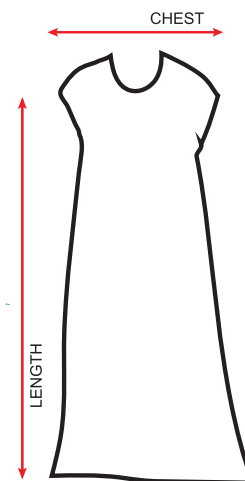
SIZE	6	7	8	9
LENGTH	32	33	34	35
CHEST	30	32	34	36

## School Dress for Girls

GR 6 - GR 12

SIZE	8	9	10	11	12	13
LENGTH	48.5	50	51	52.5	54	55.5
CHEST	32	34.5	36	37	38	39.5

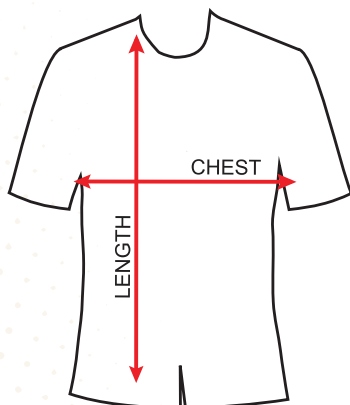
SIZE	14	15	16	17	18
LENGTH	56.5	57.5	58.5	59.5	60.5
CHEST	41	42.5	43.5	45	47





مدرسة الرشيد الأمريكية الخاصة  
Al Rashed American Private School

# Size Guide

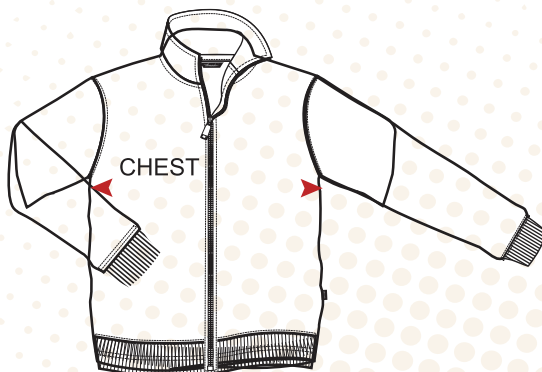


## PE T Shirt for Boys & Girls

KG - GR 12

SIZE	2	3	4	5	6	7	8	9	10
LENGTH	17.75	18.5	19	19.5	20	20.75	22	23	23.75
CHEST	25.25	27	28	29	30	31	32	33	34.25

SIZE	11	12	13	14	15	16	17	18	19	20
LENGTH	24.25	25.25	26	26.75	27.25	27.75	28	28.5	29	29.5
CHEST	35.5	36.5	37.75	38.5	39.5	40.5	41.5	42.5	43.5	45

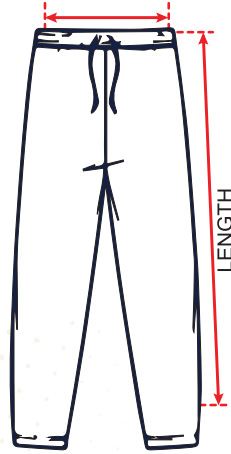


## PE Jacket Boys & Girls

KG - GR 12

Size	2	3	4	5	6	7	8	9	10
Length	16	17	18	19	20	21	22	22.5	23.5
CHEST	25	26	27	28	29	30	31	32	33
RELEXED CHEST	20	21	22	23	24	25	25	26	28

SIZE	11	12	13	14	15	16	17	18	19	20
Length	24	24.5	25	25.5	26	26.5	27	27.5	28	28.5
CHEST	34	35	36	37	38	39	40	41	42	43
RELEXED CHEST	29	30	31	32	33	34	35	36	37	38



## PE Trousers Boys & Girls

KG - GR 12

SIZE	2	3	4	5	6	7	8	9	10
LENGTH	25.5	26.5	27.5	28.5	29.5	30.5	31.5	33	34
WAIST RELAXED	18	19	20	21	22	23	24	25	26
HIP	29.5	31	32.5	33.5	35.5	36.5	37.5	39.5	40.5

SIZE	11	12	13	14	15	16	17	18	19	20
LENGTH	35.5	37	38	39	39.5	40.5	41	41.5	42	42.5
WAIST RELAXED	27	28	29	30	31	32	33	34	35	36
HIP	41.5	42.5	43.5	44.5	45.5	46.5	47.5	49.5	50.5	52.5



## Winter Jacket Boys & Girls

KG - GR 12

Size	2	3	4	5	6	7	8	9	10
Length	16	17	18	19	20	21	22	22.5	23.5
CHEST	25	26	27	28	29	30	31	32	33
RELEXED CHEST	20	21	22	23	24	25	25	26	28

SIZE	11	12	13	14	15	16	17	18	19	20
Length	24	24.5	25	25.5	26	26.5	27	27.5	28	28.5
CHEST	34	35	36	37	38	39	40	41	42	43
RELEXED CHEST	29	30	31	32	33	34	35	36	37	38

# Uniform Care Guide

The following guidelines will help you gain longevity from your garment.

## WASH CARE SYMBOLS



LONG DRESS  
TROUSERS/  
PINAFORE/  
ABAYA

Wash at 40°C.  
Higher temperatures will cause shrinkage, affect the colour or weaken the fibres.  
Wash dark colours separately.  
Avoid strong fabric conditioners as they can break the fibres.

Do not bleach.  
Do not tumble dry pleated garments as the pleats will disappear.  
For best results simply drip dry after washing.

Warm iron if needed (150°C maximum).  
If you want to improve the creases, use a steam iron or a clean damp cloth, with a regular iron.  
Do not iron on top of Print or Embroidery directly, please iron on reverse side.  
Never use a hot iron directly on the garment.

## WASH CARE SYMBOLS



SPORTS JACKETS  
TRACK PANTS/  
PE POLO TSHIRTS

Wash at 40°C.  
Higher temperatures will cause shrinkage, affect the colour or weaken the fibres.  
Wash dark colours separately.  
Remove promptly.  
Avoid strong fabric conditioners.

Do not bleach.  
These products will dry very quickly, if left to dry naturally, but if you want to do tumble dry, please do it in cool / lowsetting & remove promptly.  
Drip dry after washing.

Ironing is not necessary for these products. However if you still want to iron, use a cool iron setting (110°C maximum).  
Do not iron directly on the garment, place a clean damp cloth between the garment and the iron.  
Do not iron with excessive heat as this makes the fabric brittle. Do not iron on top of print or Embroidery directly, please iron on reverse side.

## WASH CARE SYMBOLS



SHIRTS - BLOUSES

Can be machine washed on a Gentle / polyester / easy care / delicate setting, with upto 40°C.  
Avoid strong fabric conditioners.  
Wash dark colours separately.

Do not bleach.  
These garments can be tumble dried on a cool/lowsetting.  
If the temperature is higher the fibres can be damaged and shrinkage may occur.

With these garments ironing is not always necessary, if it is hanged during drying after washing.  
However if you still want to do ironing, change the setting to synthetic/cool iron (110°C maximum) and do iron.  
Ironing will be easier if the garment is slightly damp.  
Do not iron on top of print or Embroidery directly, please iron on reverse side.

## WASH CARE SYMBOLS



Knitted fabrics 100% acrylic; combinations of : wool/nylon, wool/acrylic, wool/polyester (jumpers, cardigans, scarves & hats); cotton/acrylic; cotton/polyester; cotton/nylon

Turn the garment inside out before washing, to reduce the loose fibres adhering to the outer surface of other garments.  
Use Cool 30°C washing with gentle / delicate / wool setting, with a short spin.  
Always wash the garment separately, or with similar colour garments. Use only mild detergent if required.  
Some fabric conditioners may harm the garment fibres thereby increasing pilling

Do not bleach.  
Do not tumble dry, the fabric can be damaged and the neck, welt and cuffs can lose their elasticity.  
Always dry FLAT and Dry in the shade (direct sunlight will harm the garment).

NEVER iron on the face fabric of the garment, as it will change the appearance of the garment and cause shine.  
Always iron the inside of the garment.